



By Puku B

Colour and make—Maya Combed Temple

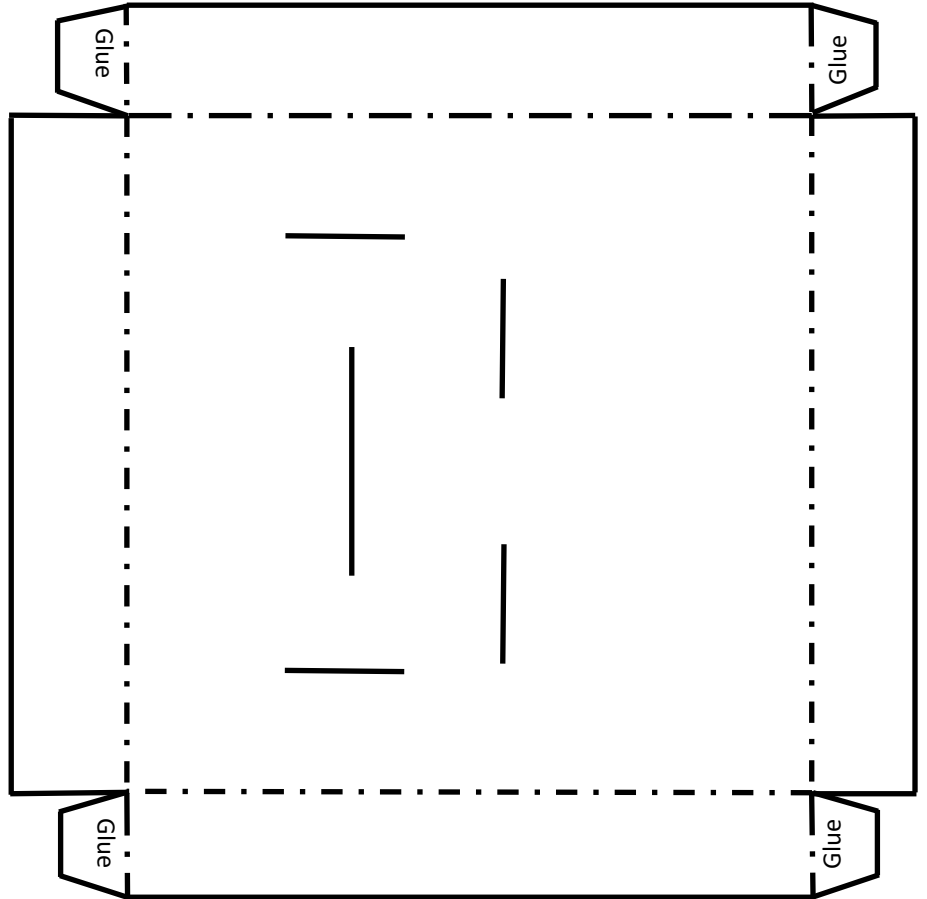
Post pictures of your finished model on our facebook page : Puku B living history or find us on Instagram

— Cut along these lines

- - - - - Fold along these lines

Tip: if you don't want to see the printed lines in your final model, colour the other side and fold them so that they are on the inside.

Base

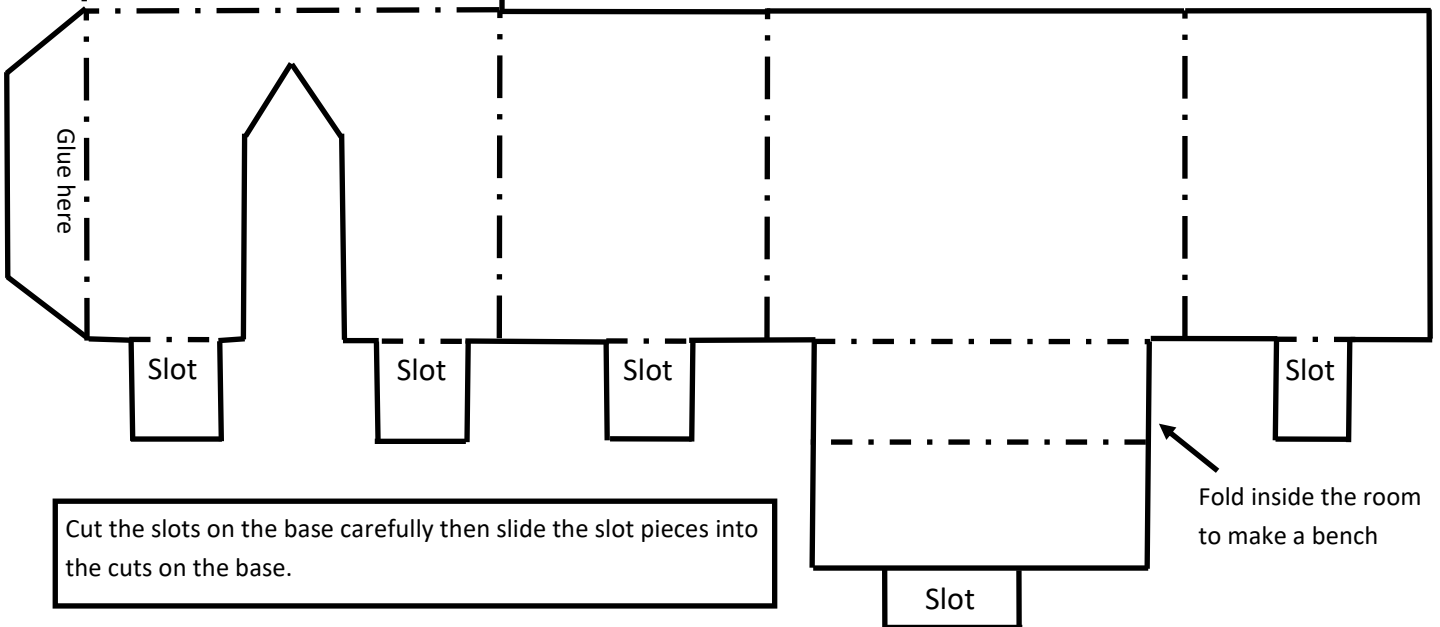


Room and comb



Glue here

Fold along central line and glue together



Cut the slots on the base carefully then slide the slot pieces into the cuts on the base.

Fold inside the room to make a bench